

Three-dimensional geometry of buried fold scarps associated with ancient earthquakes on the Puente Hills blind thrust fault: Preliminary observations

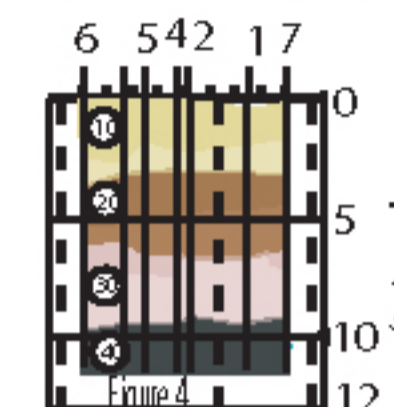
Jeff S. Hoefft¹, Lorraine A. Leon¹, James F. Dolan¹, John H. Shaw², and Ross D. Hartleb¹

¹Dept. of Earth Sciences, University of Southern California, Los Angeles, CA 90089-0740

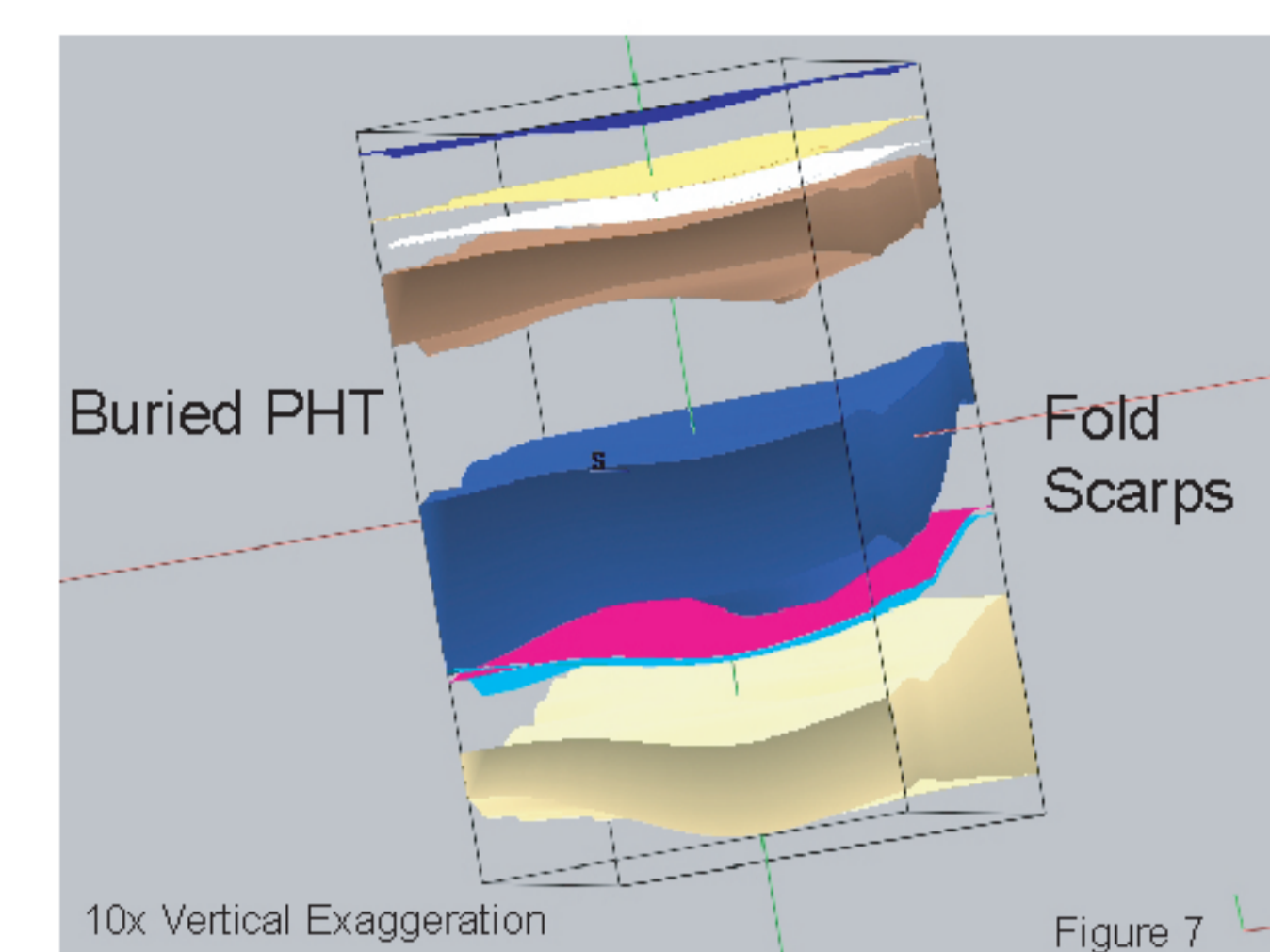
²Dept. of Earth & Planetary Sciences, Harvard University, Cambridge, MA 02138



Southern California Edison Transect



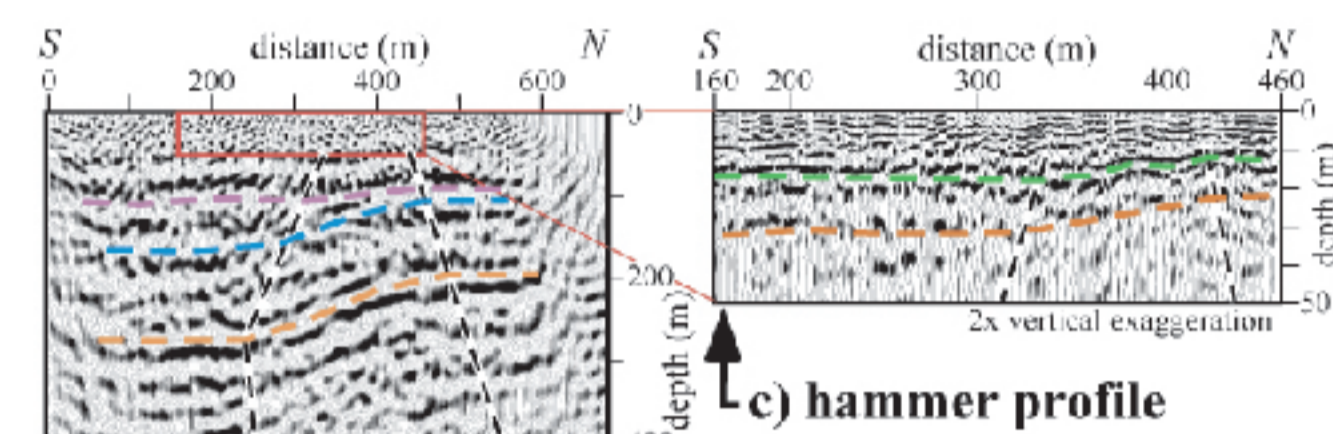
Carfax Transect



Abstract

The Puente Hills thrust fault (PHT) is a large blind thrust fault that extends east-west beneath the heart of the metropolitan Los Angeles region (Shaw and Shearer, 1999; Shaw *et al.*, 2002; Christensen, 2002; *in press*) and Dolan *et al.* (2002).

Figure 1



- Borehole
- Houses
- ▬ Borehole transect

